



Friends of the  
Rockefeller State Park  
**PRESERVE**

# The Preserve Observer

Friends of the Rockefeller State Park Preserve Magazine  
Vol. XLVIII Fall 2022



Photo: Jessika Creedon

Newly renovated Brothers Path

## Brothers Path and Overlook Trail Restored

By Jessika Creedon

This year, 2022, was an exciting one for the carriage roads in the Swan Lake area of the Preserve! The Brothers Path and Overlook Trail carriage roads were completely restored to optimal conditions in the spring and late summer. This section welcomes the greatest number of visitors, including school groups and equestrians. Maintaining a safe roadway ensures the carriage roads can be enjoyed by all ages and abilities. The projects were made possible by grants awarded to the Friends and were overseen by Preserve manager Peter Iskenderian.

The long awaited restoration of

*continued on page 4*

## This Place is Golden

By Estella Medina

*Denis Donahue, who performed as part of the musical group Out of Isolation for the virtual Peony Celebration in May of 2021, has been walking the Preserve trails for 60 years and was interviewed by Friends Board Member Estella Medina.*

**Q. Please tell us--what are some of your earliest memories?**

A. My first awareness of the Preserve goes back to 1954 or '55 on car rides with my parents along Bedford Road. I remember seeing plenty of deer. The first time I ever set foot on any of the paths was in 1960 as a 7th grade Cross-Country runner at Briarcliff. As part of our training regime, our coach, Joe Kolman, would bring us to a hill, the bottom of which was along Old Sleepy Hollow Road, to do hill running repeats. We all dreaded this hard work out, but I'm sure it paid dividends.

*continued on page 3*

**Spotted Lanternfly:  
Beware  
see page 11**



Photo: Susan Leuzenz

Jean Dolen

## A Friend to All Great and Small

By Evelyn Hadad

The beloved Preserve office manager, Jean Marie Dolen, who lived in North White Plains passed away June 23, 2022, at the age of 66 in Valhalla, NY. Peter Iskenderian said, "Jean loved the Rockefeller Preserve and loved the work she did to protect the Preserve. She passionately believed in our mission statement to provide safe and enjoyable recreational and interpretive opportunities for all New York State residents and visitors and to be responsible stewards of our valuable natural, historic and cultural resources. Jean was our rock and the Preserve is not the same without her. Jean, you may be gone from my sight but you are never gone from my heart."

*continued on page 3*

*Image: Detail from Lilacs & Silver by Joseph Keiffer*



**Friends Gala  
June 11, 2022  
at Rockefeller Playhouse**

On a glorious early summer evening, the Friends held a Gala honoring Lucy Rockefeller Waletzky, M.D., Chair of the New York State Office of Parks, Recreation and Historic Preservation and in support of the Rockwood Hall section of the Rockefeller State Park Preserve. The event featured outdoor cocktails and a festive dinner at the Rockefeller Playhouse. Spirits were high. Here are some of the scenes photographed by Richard Getler.



**Jean Dolen,** *continued from page 1*

Born in New Rochelle to Gertrude and James Dolen, Jean lived in Westchester most of her life and actively contributed to the well-being and vitality of the community in her work, activities, and willingness to serve. She treasured her family and numerous friends, and was always ready to play or help out as sister, aunt, friend, colleague, or community member. She knew nearly all the roads and byways of Westchester, as well as every hiking trail, and enjoyed guiding others in exploring the beauty of many parks and preserves.

Jean grew up mainly in Larchmont, NY. She earned an AAS degree in Accounting from SUNY Delhi and, while working a full-time job, earned a B.S. in Professional Computer Studies from Pace University. She was a congregant at Holy Name of Jesus Church in Valhalla, where she was active in the Women’s Club.

For many years, Jean worked at New York United Hospital Medical Center in Port Chester in the Data Processing Department and then moved into a position as Network Support Technician. Later, she was office coordinator and IT support at FUJIFILM USA. When a friend became disabled from a stroke, she spent several years caring for him in Manhattan, and brought him on many therapeutic excursions throughout the City and in the Adirondacks.

For decades Jean had hiked the 60 miles of trails at one of her favorite Westchester parks – the Rockefeller State Park Preserve. Four years ago Jean’s hiking companions discovered that the Preserve was looking for an office manager and they unanimously recommended Jean for the job – a perfect fit for her skills, ability with people, love of nature, and knowledge of this park. She began working at the Preserve and, with her usual dedication, she also contributed her enthusiasm to many other aspects of the park, leading groups in the dark for the annual Hulda’s Night Halloween event, protecting the Preserve from misuse, and helping out at gallery events.

Writing on behalf of nature, she contributed to this newsletter for the Friends. With her passion for the natural world, she was a strong advocate for the lands, waters, trees and flowers at the Preserve. She and Oscar, the office cat, developed a deep bond and she was the first person he trusted after his life as a stray.



Jean and office cat, Oscar

*continued on page 10*

**Golden** *continued from page 1*

In Junior and Senior High School, we trained as a team from Monday to Friday. On the weekends, we did “easy runs” individually or in small groups. We often raced on Saturday during the height of the season. Each fall, there were “tryouts” for the team where we ran a mock race at our home course in Ryder Park (Ossining). When I was a freshman, at the tryouts, three fellow Freshmen classmates and I displaced four upperclassmen who had run Varsity the year before. All but one quit the team rather than be relegated to Junior Varsity by upstart Freshmen. When I began running in 7th Grade I was 7th (last man on the team) most of the time. By 12th Grade I was consistently number 1 on the team and was selected by the Westchester, Putnam, and Rockland Coaches and Officials to the All-County Team.



*Penn Relays - Getting ready to set 4x880 school record of 8.07.9 in 1967.*

**Q. Quite an accomplishment! A great place to train then.**

A. The Preserve became a frequent visiting place for me after that; through school and into adulthood. Beginning in the late 70’s, I began training for marathons and distance races, and ran at the Preserve two or three days a week doing tempo runs around the Thirteen Bridges loop, and Sunday long runs of two to three hours duration.

**Q. The late 70s were early days for running, not as popular as today. What was it like?**

A. There were only a handful of runners at the Preserve when I started running there again in 1979, but that quickly changed within just a few years. Other runners learned of the place by word of mouth, and runners from the slow joggers to world-class racers began to appear from all over. Some of the trails we ran on then are now closed to the public, but the trails then are mostly identical to today’s trails.



*Denis Donahue being cheered on in 1993 Lake Winnipisaukee Relay Race.*

**Q. Did you run alone?**

A. Most of my running at the Preserve was alone, and I recall being startled one crisp, fall afternoon when a runner passed me like a flash. I had been running at a good pace (for me) along the Eastview ridge and never heard the runner

*continued on page 10*

Photo: Susan Letzenz

**Trails**, continued from page 1

Brothers Path began in July and was completed by early September. Swales were reestablished, drains were cleared, broken bluestone drain caps were replaced, new surface material was added and the crown was restored. These improvements will make year round visits safer and more enjoyable. Muddy ruts, which plagued areas with no pathway for drainage, will now be dry, road edge erosion is curtailed and the compacted surface material is comfortable and secure to walk on. In addition, existing footpaths to Swan Lake were rebuilt, graded and designed with an eye towards accessibility.

Work is also underway at Rockwood Hall. The historic Hastings pavers, the hallmark of Rockwood Hall, are missing or damaged in many areas. New pavers are being laid to match the existing pattern. These repairs will make the area much safer, as well as stop further deterioration of this historic site.

The work at Brothers Path and Rockwood Hall was achieved by a New York State Environmental Protection Fund Grant. The Friends contributed a 50% match of \$250,000, to bring the project total to \$500,000.



Photo: Jessika Creedon

Newly Renovated Overlook Trail

Another recently completed restoration is Overlook Trail, which intersects with Brothers Path. A popular trail that offers panoramic views of Swan Lake, the severe storms over the past few years had taken their toll on it. The carriage road width had deteriorated significantly and water was no longer being directed

towards the drains. Large ruts were growing deeper, exposing rocks and washing what surface material was left, into the brush on the roadsides and towards Swan Lake. The end to end and edge to edge restoration – all 2,180 linear feet - including masonry repairs of three existing catch basins, took just under a month. Reshaping the roadway and restoring the crown diverts water to the designated swales and drains.



Photo: Jessika Creedon

New pavers being placed at Rockwood Hall.

The Rehabilitation of the Overlook Trail Carriage Road was supported with funding from the New York State Park and Trail Partnership Grants and New York’s Environmental Protection Fund. The Park and Trail Partnership Grants are administered by Parks & Trails New York, in partnership with the NYS Office of Parks, Recreation and Historic Preservation. The Friends contributed a 10% match of \$10,000, to bring the project total to \$70,000.

These beautifully restored carriage roads will be highlights of our fall fundraising events. Brothers Path was race ready for the October 15th Rocky’s 5k and the new pavers will shine at the November 12th Pocantico Hills Marathon & Half Marathon and the November 13th Hunter Pace.

Intermittent closures were unavoidable while work was underway and we understand that can be an inconvenience, but we thank everyone for your patience, the results are worth it! We also want to thank our donors, members and event attendees for their support. Donations and event revenue make grant matches possible. Thank you.



**15th Autumn Hunter Pace**

Friends and Eastern Hudson Valley Horse Council host Hunter Pace on Sunday, November 13, 2022, Beautiful vistas and a challenging course make for a really fun experience!




**Reaching the Friends**  
 Friends of the  
 Rockefeller State Park Preserve  
 P.O. Box 8444 • Sleepy Hollow, NY 10591  
 (914) 762-0209

**The Preserve Observer**  
 E-mail: Friends@friendsrock.org  
 Website: www.friendsrock.org  
 facebook.com/rockyspark  
 instagram.com/ friendsofrpspp  
 Editor: Evelyn Hadad  
 Letters and submissions are invited.  
 Please contact us c/o the Friends.

## From the Friends President

By George Gumina

Dear Friends,

It's been a long, hot summer but we're in cooler weather now and taking a walk in the Preserve is still an excellent idea for your health!

The Peony Celebration in May was a big success, with the peonies blooming in all their splendor and the art exhibit that accompanied them, *A Profusion of Peonies and Posies*, was exciting. The volunteer gardeners led by Ketih Austin, Chris Davies and Jo Ann Stern once again did a magnificent job.

We finished up June in a strong way with both the 10K Rocky's Ramble and the Gala at the Rockefeller Playhouse honoring Lucy Rockefeller Waletzky, MD, a stalwart supporter of the Friends and the Preserve. The funds raised from the Gala will be used for landscaping at Rockwood Hall. New pavers have also been put in at Rockwood Hall to repair the walkways.

The rehabilitation of Brothers Path is finished and Nicky Digg's Excavation Inc. did an outstanding job! The carriage road is now smooth and the swales and drains are clear and usable. This \$500,000 project was supported equally by both the Friends and New York State showing the power of a public/private partnership.

This month we had the 5K race on October 15, which was a big success. All funds go toward the maintenance of the carriage roads.

The half marathon/marathon will be on Saturday, November 14, 2022 and everyone is excited. This is the second year for the marathon and the first for the half-marathon!

On Sunday, November 15, the Pace will return to the Preserve after several years' absence due to the Covid virus. This year we are co-sponsoring with the Eastern Hudson Valley Horse Council.

I look forward to seeing you out on the carriage roads! And please support the Friends and the Preserve. We appreciate your help!



*From the Cover: Lilacs and Silver by Joseph Keiffer*

### Board of Directors

#### Friends of the Rockefeller State Park Preserve

George Gumina, *President*  
 M. Evelyn Hadad, *Vice President*  
 John Nonna, *Secretary*  
 Carol M. Lyden, *Treasurer*

Benjamin H. Cheever  
 Brian Geary  
 Patrice Ingrassia  
 Patricia Jones  
 John N. Manuele, *Executive Board*

Stella Medina  
 Clare M. Pierson, *Executive Board*  
 Kimberly K. Rockefeller  
 Donald W. Stever  
 Ron Vogl

Administrative Director: Jessika Creedon

# A Walk Through the Forest



photo: Tom DeRentiis

Thirteen Bridges Trail follows Gory Brook, a slender stream which flows into the Pocantico River. Its pools and riffles are home to creek chubs, salamanders, and freshwater invertebrates.

When the Rockefellers built the carriage roads a century ago, they crisscrossed the brook with 13 bridges.

Today 13 Bridges Trail is a popular, rewarding hiking and riding trail.



photo: Heidi Fuhrman

The trail through forested valley feels timeless. Towering tulip poplar, immense oaks, and dark hemlocks form a forest of deep



photo: Heidi Fuhrman

serenity. In places, spring wild flowers dapple the forest floor amongst an abundance of ferns, such as evergreen Christmas fern. The tapping of woodpeckers punctuates the quiet.

Surprisingly, there is evidence that this lovely, mature forest was once colonial farmland, probably pastures given the topography and rockiness. When farming ended, sun-loving red cedars grew in the abandoned fields, succeeded by the hardwoods.



Today, a few remaining silver trunks of the dead cedar and low rock walls cutting through the shady forest bear witness to change over time.

Dark evergreen hemlocks are a predominant forest tree in this sheltered valley. Their small cones attract birds and perennial shade



cools the brook and its denizens. Unfortunately, many hemlocks have died here and in the Hudson Valley due to a non-native insect called the Hemlock woolly adelgid, one of several pests and pathogens that are killing and weakening mature trees in the Preserve; branches infested by the adelgid look coated by woolly snow.



# on Thirteen Bridges Trail

Here and elsewhere in the Preserve large mature trees are succumbing to non-native insects, disease, and blowdowns. This coupled with inadequate tree



regeneration jeopardizes the forest of the future.

Hemlock seedlings, for example, are

capable of growing in the forest's shade, but they don't survive intense browsing by deer. Next time you're out, look closely, and you'll find very few tree seedlings in the forest.



photo: Robert Uricchio

Most of the trail is shaded, but in the sunnier gaps, you'll notice clumps of Japanese barberry, a thorny invasive shrub that deer avoid. Imported in 1875

as an ornamental, this shrub is now problematic here and elsewhere in the Hudson Valley. Spread by birds, it has proliferated, contributing to the loss of



less hardy native wildflower and shrub species. Interestingly, research by University of Connecticut found that the multi-stemmed barberry creates a perfect, humid environment for ticks. The stems also shelter mice, one of the principle vectors for Lyme disease. Rates

of disease infected ticks correlate to barberry density. Barberry is one of several invasive species that the Preserve is removing and working to control.



The tulip poplar is the forest's tallest, straightest tree species. Some are 2-3 feet in diameter and over 110 feet tall, which makes it difficult to see their bright spring flowers of pale green with peachy-orange centers in the upper branches. The flowers attract hummingbirds, Eastern Swallowtail butterflies, and wild bees. Chipmunks, squirrels, and birds feed on their abundant seeds through the fall



photo: Doris Wiese

and winter. You'll certainly see chipmunks, except in deepest winter when they doze in tunnels and hollow trees. Most of the year they zip from log to rock and fill the woods with their chattering and bird-like calls. While they forage for seeds, fruits, nuts, mushrooms, insects, worms, and bird eggs, they are hunted by hawks, snakes, foxes, raccoons and other predators.



For more information, visit the Preserve's blogspot: <http://rsppvunteers.com>

## ❖ Gallery Schedule at a Glance ❖

### THE ART OF FINE LIVING AND FEASTING

October 15 – November 27, 2022

Artists Reception: October 16: 12-3PM

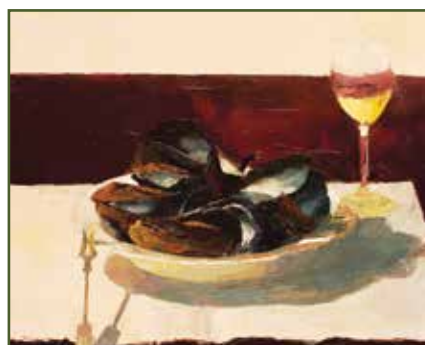
**Joseph Keiffer** and **Jarvis Wilcox** animate the poetry of the material world. Their images are symbolic in still life, and landscape applying rich layers of oil paint in dynamic patterns.



Jarvis Wilcox: Lobster Salad in the Making



Joseph Keiffer: Italian Breakfast



Jarvis Wilcox: After the Meal

---

### PRESERVE AMERICA

December 11, 2022 – February 6, 2023

Artists Reception: To Be Determined  
(please check our website closer to the date)

The amazing artists to be included in this exhibit include **Michael Garber**, **Joseph Keiffer**, **Jarvis Wilcox**, **Walter LeCroy** and others. This exhibit will be predominantly paintings.



Michael Garber: Montgomery Place



## From the Preserve Manager

By Peter Iskendarian

Change is an ongoing occurrence at the Rockefeller Preserve. Whether it's staff changes, habitat modifications, infrastructure projects or the gradual changes of the seasons, change is all around us. Change is not always a good thing and can sometimes throw us for a loop, but we take the good with the bad and we roll on.

As the summer heat took hold of the northeast and most people stayed away from the Preserve, some changes happened that you may not even be aware of, and as you read through this issue of the Observer, you'll realize that we have been through some tough times the last few months, changes that we were not expecting. The good times seem to get us through these tough spells and keep our minds clear for just a little while so we can get the work done. We count on each other, and when I say "we" I mean the Preserve staff, Friends Group members, partners like Stone Barns, volunteers and guests all have an integral part in managing change and keeping the Preserve functioning and safe for all its residents and users.

### Bad:

- Loss of loved ones – office manager Jean Dolen, board member Herb Hadad, my Father
- Staff left for new positions – building/groundskeeper James Paolicellis, and facility supervisor Dmitri Benzinger
- Trouble hiring new staff in the new working climate we are in



Photo: Jessika Creedon

Some of the volunteers who attended the Friends Volunteer Party held on May 23, 2022. The Friends and the Preserve appreciate all they do each and every day of the year!

- Invasive Insects - Spotted Lanternfly (SLF), Hemlock Woolly Adelgid (HWA)
- Water Issues/Drought/Global Warming

### Good:

- Creation of a new pollinator garden and trailhead on Rte. 448 with 100% support from the Pocantico Community and the Friends
- Brothers Path Loop Rehabilitation – Friends support
- Overlook Trail Rehabilitation – Friends support
- New waterline and fiber optic line coming – State support
- New Equipment – Mower, Compactor/Roller, Dump Truck – Friends support
- Tree dedication for Richard Nelson planned in the late Fall – Staff support

We at the Preserve look forward to a bright tomorrow with all of your continued help!



Photo: Edward Hadad

Children enjoying summer evening at Rockwood Hall

## Rockefeller State Park Preserve Staff

### Operations

Peter Iskenderian, Preserve Manager  
 Laurence Gill, P&R Supervisor / Director of Operations  
 Linda Parker, Parking Lot & Patron Services

### Conservation & Stewardship

Joshua DiPaola, Natural Resource Specialist  
 Devyani Mishra, Stewardship Crew Leader  
 Kim Fendrich, Environmental Educator  
 Susan Lewenz, "Ranger Su", Conservation Coordinator

### Maintenance

Maso Robinson, Head of Buildings & Grounds  
 Jack Gandolfo, Buildings / Groundskeeper  
 Stacy Robinson, Buildings / Groundskeeper

### Art Gallery

Audrey Leeds, Gallery Curator

**Golden** *continued from page 3*

approach. A quick “hi” and a wave from Eamonn Coghlan (1983 World 5,000-meter champion), and he was off like a rocket.

As a father of four children, the Preserve (particularly Rockwood Hall) was a favorite place to visit for the kids. I don’t think I brought any of my children to the Preserve until the youngest was 2 or 3--1986 or so. I’d bring them to Rockwood Hall where we’d fly a kite at the northwest corner of the property at the base of a steep hill. Sometimes we’d look for frogs and tadpoles along the brook in that section.

**Q. What sounds do you associate with your time in the Preserve? What comes to mind?**

A. The only real connection between my music and the Preserve is that occasionally I will play a few tunes on a tin whistle at the top of Eagle Hill or listen to my Walkman on a stroll around Swan Lake. Sounds of the Preserve...birds singing, breeze through the trees, babbling brooks, cows lowing, grasshoppers in the tall grass. Sometimes just a stunning silence!

**Q. How did you learn how to play the flute...and what exactly is a tin whistle?**

A. A tin whistle is a small simple system flute, six holes, it’s a tube, you blow in it. I got one very similar to this in a music kit when I was 6 years old, with a drum, a triangle, a flute....I held onto that little flute until I was about 12, and it broke...I think somebody sat on it.



*Donohue playing the flute at the Mills Inn, Ballyjourney, Cork, Ireland in 2017.*

Photo: Dagnmar Steele

**Q. What would you say is the biggest difference that you see in the trails today from your early days? And what is the same?**

A. I don’t see all that much difference in the Preserve from those days. More visitors owing to the large parking area and Visitor Center, which were not there at that time. Better trail markers and maps of the trails. Basically very much the same once you get onto the trails. It’s great that they have races there now, that was my fantasy back when I was running.... boy, if there was only a race here!

**Q. Can you sum up what the Preserve has meant to you for all these years in your life?**

A. The phrase that always comes back to me--I can’t remember who said it-- but we were out there running, and we would pick up trash here and there. The guy says, “This place is golden, we gotta keep this perfect”. God, this place is golden. That about sums it up for me.

**Jean Dolen,** *continued from page 3*

Throughout her life, Jean was active in many clubs and volunteer activities as a member and a leader. She was an officer in the Adirondack Mountain Club Mohican Chapter, and she led many group trail hikes as well as walking tours of Central Park in Manhattan. She earned membership in the Catskill 3500 Club and was the #1,000 person to complete all the mountain peaks of 3,500 feet in the Catskills. She climbed the peaks both in summer and in winter hikes. She was #49 to complete the Long Path that starts near the George Washington Bridge in New York City and goes up through the Catskills to near Albany.

Jean had a lifelong love of the Adirondacks and took many beautiful photographs in the Adirondack Park. She created a book of them, with a copy now in the Old Forge Library. Jean also traveled to Hawaii and the West Coast, and to Europe, visiting Sweden and kissing the Blarney Stone in Ireland.

She introduced her companion Mark to this large family network and to many outdoor activities, before his death a few years ago. There were always boundless family gatherings with Jean at the center.

Throughout her journey with cancer, Jean amazed friends and family with her strength, determination, and zest for life. Until right before her death, she continued to work full-time and outpaced others on hikes of many miles. Jean is survived by three brothers, a sister and their large families, including Jean’s nine grandnieces and grandnephews.:

Jean was supported during her illness with food delivery and weekly lunches out at the local diner, trips to the laundry, rides, errands, and check-ins. In her final days she was held in love and prayer by family and friends, and prayer blessings from staff at the Grove. Friends board member Herbert Hadad had said, “Jean is one of the kindest persons I know and what is more essential in this world than kindness.” That is the enduring example Jean leaves to all of us.



*Jean in the courtyard of the Preserve she loved*

Photo: Herbert Hadad

## Spotted Lanternfly: What to Expect

By Devyani Mishra

You may have heard of spotted lanternfly, the insect besieging New Jersey and Pennsylvania state parks. Or maybe a grey and red peanut-sized insect has haphazardly flown into you as you walk about New York City. Here's what you need to know about New York's newest formidable foe.

Spotted Lanternfly (*Lycorma delicatula*) is a leafhopper insect that feeds primarily on tree-of-heaven, a tree that spreads through forests disturbed by human activity. Both tree-of-heaven and spotted lanternfly were introduced to the US from China and are considered invasive, meaning their spread threatens biodiversity. Once spotted lanternfly establishes on a stand of tree-of-heaven, it can spread to maples, walnuts, apples, grapes and hops, posing a threat to New York agriculture. In forest systems, spotted lanternfly causes damage to understory plants by raining honeydew, a secretion of excess sugar from sap-loving insects. The honeydew grows sooty mold, which disrupts photosynthesis and can kill the plants it grows on.



*Spotted Lanternfly specimen*

Rockefeller State Park Preserve currently has 7 traps set up to monitor spotted lanternfly. These monitoring data are reported to the NYS Department of Ag and Markets and are informing our plans to manage the population and its impacts. So far, they have been found in two of the traps, at Rockwood Hall and Stone Barns Center for Food and Agriculture. If

you see a spotted lanternfly anywhere else in the park, please report the GPS coordinates to [stewardship@rockefellerstateparkpreserve.com](mailto:stewardship@rockefellerstateparkpreserve.com) or 914-631-1470.

Beyond monitoring, we are calling on our park patrons' help to control spotted lanternfly. If you see one, please kill it! This is one of the few cases where killing something within the preserve is allowed and even encouraged. Any instance of taking a life is reason for careful consideration, but in this case, removing the possibility of a reproducing spotted lanternfly does a greater good for our forests, farms, and all their benefactors.

## A Volunteer for All Seasons



*Hailey Schott*

Hailey Schott is an 11-year old artist living in Westchester County and is one of Rockefeller State Park Preserve's most dedicated volunteers! She considers the Preserve her "second home". A member of the Guardian volunteers for RSPP, she co-leads the monthly Full Moon Hikes and educates visitors as a Monarch Ambassador.

Hailey has decided to sell her original art pieces to raise money for the Preserve. Hailey enjoys working with a wide variety of mediums – acrylics on canvas, watercolors, paintings on porcelain, sculptures and more. The auction was begun with limited items on September 17th. On September 18th the full auction began with new items added until the end of the event! The event will end on November 13, 2022.

Please take a look at the items for sale on the Auction Site. To view Hailey's art items and bid on the auction, go to the Friends web site: [www.friendsrock.org](http://www.friendsrock.org). Come join the fun!



*A Blue Butterfly, acrylic on canvas*



*Sunset, acrylic on canvas*



## The Preserve Observer

Friends of the Rockefeller State Park Preserve  
P.O. Box 8444  
Sleepy Hollow, New York 10591  
www.friendsrock.org

RETURN SERVICE REQUESTED

NON PROFIT  
U.S. POSTAGE  
PAID  
White Plains, NY  
Permit No. 3151

[friendsrock.org](http://friendsrock.org)

## HERE TO ENJOY...OURS TO PRESERVE

### Rockin' With Rocky's Ramble 5K

The Rocky's Ramble 5K race was held on a crisp Saturday morning on October 15, 2022. Volunteers and runners were excited as they gathered beforehand to sign up and stretch and get ready for what is a challenging but very scenic course. The 5K sponsors, for which we are deeply grateful, are: **Wegman's, Amrita, Phelps Hospital/Northwell Health, Briarcliff Manor Ambulance and Westchester Road Runner.** Nicholas Speranza, wearing an NYPD tee shirt and coming in 3rd in his age category of 60, commented, "You really put on a very well-organized race!" He should know, after running our race, he was heading off to participate in another one at noon. Now that is one fit officer!

*Coming up next...there is still time to register!*

**Pocantico Hills Marathon and Half Marathon**

**Saturday, November 12, 2022**

**8:00 AM - 4:00 PM**

**Rockwood Hall**

**1 Rockwood Road • Sleepy Hollow, NY, 10591**



*Excited start of Rockwood Ramble 10k race held on June 4, 2022*



*Nicholas Speranza*

*Photos: Joe Golden*